



Zenobia Ellenbrook Avenue, Douglas, IM2 1QJ
Asking Price £365,000



- True two-bedroom bungalow located on Ellenbrook Avenue, offering peaceful countryside views and just two minutes from the heart of Douglas
- Well-appointed dining kitchen with ample units, space for a table, integrated appliances, and direct access to the rear garden and utility room
- Positioned within the desirable Kewagigue School catchment area, ideal for families seeking quality education and a convenient location
- Two double bedrooms with built-in wardrobes, complemented by a modern shower room and separate WC for everyday convenience
- Spacious living room opens into a bright conservatory, showcasing uninterrupted rural views and filling the space with natural light
- Private driveway for two vehicles at the front, with a large tiered rear garden featuring a generous lawn and countryside backdrop



Zenobia Ellenbrook Avenue, Douglas, IM2 1QJ

Zenobia is a true two-bedroom bungalow enjoying outstanding open countryside views to the rear, nestled in the peaceful setting of Ellenbrook Avenue on the outskirts of Douglas. This idyllic location offers the best of both worlds—rural tranquility with scenic surroundings, yet just a short two-minute drive from the town centre. Perfectly positioned within the highly sought-after Kewagie School catchment area, this property is ideal for families looking to combine comfort with convenience.

The accommodation is thoughtfully laid out and begins with an inviting L-shaped hallway. The spacious living room is filled with natural light, flowing seamlessly into a bright conservatory that showcases the property's stunning countryside backdrop. This space creates the perfect spot to relax while soaking in the peaceful rural views. The dining kitchen is a generous, practical area featuring ample wall and base units, space for a dining table, and fitted appliances. A double-glazed door opens directly to the rear garden, while an additional door leads to a fully glazed utility room along the side of the property.

There are two well-proportioned double bedrooms, both with built-in wardrobes, offering plenty of storage. The shower room is fitted with a modern suite, and there is a separate WC for added convenience.

Externally, the front of the property offers off-road parking for two vehicles via a private driveway. The rear garden is a fantastic size and arranged over two tiers. The lower level offers a generous lawn space, perfect for outdoor entertaining, relaxation, or enjoying the tranquil surroundings this lovely home provides.





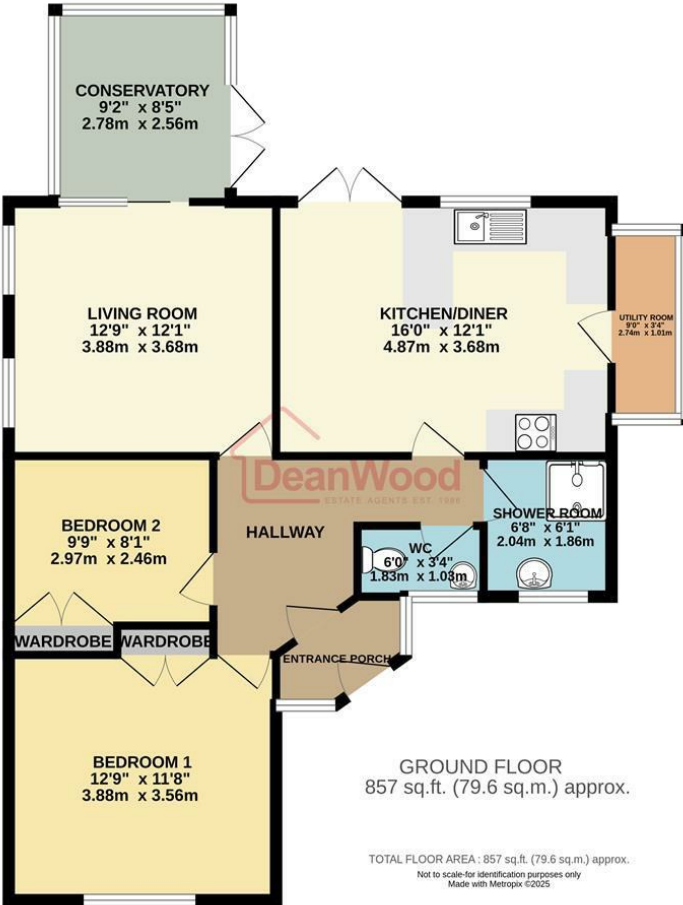












DOUGLAS
37 VICTORIA STREET
DOUGLAS
ISLE OF MAN IM1 2LF
T 01624 620606
F 01624 677363
E info@deanwood.co.im

CASTLETOWN
COMPTON HOUSE
9 CASTLE STREET CASTLETOWN
ISLE OF MAN IM9 1LF
T 01624 825995
F 01624 825996
E castletown@deanwood.co.im

RAMSEY
LEZAYRE HOUSE
87 PARLIAMENT STREET
RAMSEY ISLE OF MAN IM8 1AQ
T 01624 816111
F 01624 816588
E ramsey@deanwood.co.im

These particulars are for information purposes only. They do not constitute or form any contract nor should any statement contained herein be relied upon as a representation of fact. Neither the vendor nor DeanWood Agencies Limited ('the firm'), nor any officer or employee of the firm accept liability or responsibility for any statement contained herein. The vendor does not by these particulars, nor does the firm, nor does any officer or any employee of the firm have any authority to make or give any representation or warranty whatsoever as regards the property or otherwise. It is the sole responsibility of any person interested in the property described in these particulars to make all proper enquiries and searches to verify the description of the property and all other particulars herein.

FOR MORE PROPERTIES VISIT OUR WEBSITE @ **deanwood.im**